



Travelteer

SCHOOL TRIPS

TRAVEL & VOLUNTEER EXPERIENCES



NEPAL



TRIP TYPE
All Inclusive



DURATION
14 days



MINIMUM AGE
16 Years Old



GROUP SIZE
20 Students

TRAVELTEER

A BIT ABOUT US

OUR CONCEPT

Travelteer is at the forefront of responsible travel and ethical volunteering. We are proud of the positive impact that our volunteer work has had on disadvantaged communities in South Asia and we have created a variety of charitable programmes that utilise volunteer skill sets to make a real difference.

OUR MISSION

Establishing a bridge between volunteering and adventure. We provide school students the chance to explore new places, broaden their horizons and offer support in communities less fortunate than their own.

Our school trip experiences can count towards the 'residential' element of the Duke of Edinburgh Gold Award Scheme – providing fantastic experience for all those involved. Speak to your DofE representative for more information!

EXPERIENCE

Over
2,500 Volunteers
To Date



PARTNERS



BILBOROUGH
SIXTH FORM COLLEGE



Tuxford Academy
Excellence through Teamwork



The Joseph Whitaker School
An Academy and Specialist Sports College



Newcastle
Under
Lyme
School



**The University of
Nottingham**

UNITED KINGDOM · CHINA · MALAYSIA

**NOTTINGHAM
TRENT UNIVERSITY**

Quality Badge awarded by



Council for
Learning Outside the Classroom

LOTC APPROVED

Awarded the national certification for
'Learning Outside The Classroom'.

TRAVELTEER

OUR CHARITY

TRAVELTEER IMPACT

'Travelteer Impact' is our non-profit charity that works with local communities by creating, sustaining and further developing charitable projects that help preserve the environment and create brighter futures for local children.

CHARITY OBJECTIVES

1. Unlock the potential of under-privileged children in rural communities.
2. Rehabilitate and regenerate the local environment.
3. Protect and repopulate indigenous wildlife.
4. Utilise volunteers to maintain and develop projects.



Over
£250,000
Donations
To Date

Charity Number: 1168026

EXPLORE NEPAL





NEPAL HIGHLIGHTS



Explore ancient temples and learn about the rich Nepalese culture.



Search for Rhinos, Elephants and the rare Bengal Tiger on our jeep safaris!



Hike through the foothills of the Himalayas, with the majestic mountain range as your backdrop.



Experience the world's highest and steepest zip line!

“WHERE IS NEPAL?”

The mountainous country of Nepal borders both India and China and is home to the mighty Himalayas! Dramatic mountain landscapes, rare wildlife and rich culture make this a bucket list destination!



SEE WHAT'S
IN STORE &
WATCH OUR
VIDEO!



SCAN HERE

SCHOOL TRIPS

AN OVERVIEW

Our volunteer and travel experience in Nepal is exclusively designed for school groups - blending education, adventure and volunteering into a fourteen day trip. Our educational visit will combine a first week of guided group travel around the country followed by a second week of high impact volunteering. The entire experience is guided in-country by our UK management team and all students receive 24hr support and flight chaperoning!

During the volunteering week, all students will partake in our Community Development programme that focuses on education, sports and agriculture in Nepalese mountain communities.

WHAT'S INCLUDED



VOLUNTEER
PACK



ACCOMMODATION



FOOD



PRIVATE
TRANSPORT



IN-COUNTRY
SUPPORT



AIRPORT TRANSFER



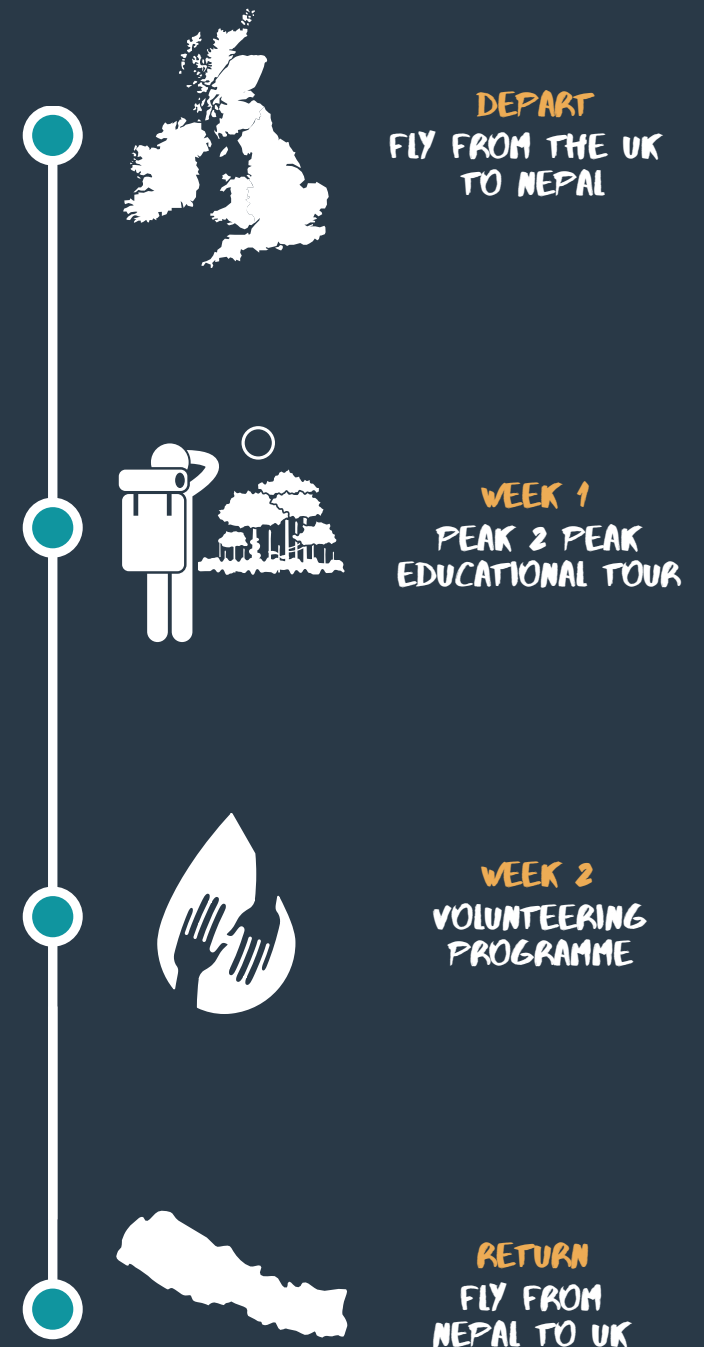
VISA



FLIGHT



TRAVEL INSURANCE



WEEK 1: PEAK 2 PEAK

THE TOUR EXPLAINED

Our Peak 2 Peak educational tour provides students with the opportunity to experience the rich culture, mountainous beauty and rare wildlife of Nepal in a safe and exciting environment.

Our expert in-country team will be guiding the school group every step of the way. Travelteer organises travel and volunteering experiences for 500+ students annually and all accommodation and activities have been hand-picked by Travelteer management.

Our wide range of activities allows students to experience all of the country's highlights, whether that be trekking in the foothills of the Himalayas, searching for Rhino and Bengal Tigers on a guided safari or ziplining past epic mountain views!



EXPERT
GUIDES



STAFF TO
STUDENT RATIO



OUR OWN
A/C VEHICLES



HAND-PICKED
ACCOMMODATION

WHICH REGIONS WILL WE EXPLORE?

EXPLORE?



KATHMANDU
TEMPLE VISITS
NEYDO TASHI CHOELING
MONASTERY



CHITWAN
WILDLIFE SAFARI
JUNGLE WALKS



POKHARA
TREKKING THE HIMALAYAS
ZIPLINING



TOUR ITINERARY

TOUCHDOWN IN NEPAL & EXPLORING KATHMANDU

1. AIRPORT ARRIVAL

On arrival in Nepal, the school group will be collected from the airport by Travelteer and driven to the Kathmandu hostel. Here the students will have the chance to relax before Travelteer staff conduct a full induction and tour briefing in the evening!



TIME TO GET
EXPLORING!

2. KATHMANDU

An early start the next day will see the students exploring the many cultural wonders of Kathmandu including the Budhnath Stupa (one of the biggest Buddhist shrines in the world), Monkey Temple and Patan Dubare square. Students will also have the opportunity to enjoy a cooking class to make 'Momo' - a delicious delicacy of Nepal!



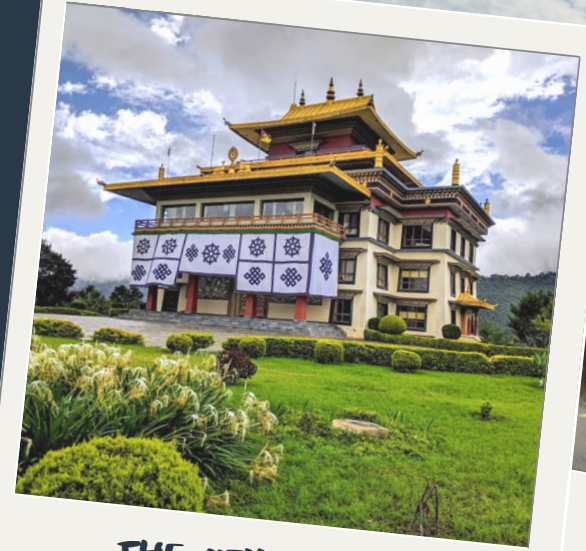
THE RICH CULTURE OF
KATHMANDU

TOUR ITINERARY

CULTURAL DANCES & JUNGLE EXPLORATION

3. THE NEYDO TASHI CHOELING MONASTERY

Nestled in the mountains is the Neydo Tashi Choeling Monastery where 200 monks live and study. Students will have the opportunity to participate in their daily practice, eat alongside them, and experience monastic life first-hand in the most peaceful environment.



THE NEYDO TASHI
CHOELING MONASTERY



ENJOY AN EVENING OF
CULTURAL DANCE

4. JUNGLE WALK & CULTURAL SHOW

Our fourth day is all about exploring magical Chitwan. Heading into the Terai Lowlands of south-central Nepal, we reach the Royal Chitwan national park - the early afternoon will be spent by the hotel pool followed by a guided nature walk on the edge of the national park! The group will then enjoy a cultural show in the evening, showcasing cultural dance with amazing local music and costumes.

TOUR ITINERARY

TRACKING WILDLIFE & ENTERING POKHARA

5. JEEP SAFARI & DRIVE TO POKHARA

We kick off day five with a private jeep safari, exploring the deepest parts of the jungle searching for the elusive Rhinoceros and Bengal Tiger! Following the safari, the group will jump back into our transport and head for the region of Pokhara.



EXPLORE CHITWAN
NATIONAL PARK

6. TREKKING THE FOOTHILLS

After visiting the International Mountain Museum in the morning to learn more about the Pokhara region we will begin our first hike! Our first trail is the perfect introduction to mountain trekking as we ease the students into it with an easy trek between Astham and Kade, meandering between hillsides and over open plateau.



INCREDIBLE VIEWS
EVERYWHERE YOU LOOK!

TOUR ITINERARY

HIMALAYAN LANDSCAPES & WHITE WATER RAFTING

7. ENTER THE HIMALAYAS

Day seven is our big trekking day, entering the Himalayas and skirting a small section of the world famous Annapurna Circuit. The experience is truly breathtaking and having the 8,091 metre high summit of 'Annapurna I' rising above you has to be seen to be believed!



8. PEACE PAGODA & ZIPLINING

For the last day of our tour we will visit the beautiful sights of Pokhara, surrounded by epic views of the Himalayas! The group will enjoy a boat trip on Pokhara Lake leading to the majestic World Peace Pagoda. Students will then experience the longest and steepest zip-line in the world! The zip-line is located in one of the most scenic places on the planet, giving you front row seats to views of the breathtaking Annapurna mountain range, Mount Machhapuchhre (Fish tail), and the Seti River.

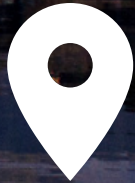
WEEK 2

VOLUNTEERING IN THE HIMALAYAS



For the second week of the school trip, each student will take part in our Community Development programme, volunteering with mountain communities to help develop education, sports and agriculture.





POKHARA

VOLUNTEER PROGRAMME:

COMMUNITY DEVELOPMENT

Our Community Development programme provides an amazing insight into mountain life and our school trip experiences have already had a major impact on a number of mountain communities in the Pokhara region:

1. EDUCATION



Travelteer currently teaches in 4 local schools and volunteer fundraising has already vastly improved classroom facilities as well as providing school meals in a number of disadvantaged communities.

2. SPORTS



We believe sport is an important part of a child's education and UK students will assist in various sport sessions and cultural exchanges!

3. AGRICULTURE



Travelteer has already constructed 15 greenhouses with the help of volunteers. UK students will be helping with everyday farming duties!



DEVELOPMENT PROJECT EDUCATION

OVERVIEW

The focus of the educational element in our Community Development programme varies depending on each school's needs. Some schools just require assistance in fun and interactive games, whereas others require basic needs such as freshly painted classrooms and school meals.

UK students will assist in after-school English lessons and help paint, clean and decorate classrooms - creating brighter futures for children in mountain communities.

Additionally, UK volunteers will be actively involved in the national 'One Child, One Light' scheme, with their fundraising providing local children with LED lights that allow them to continue studying after dark.

VOLUNTEER ROLES

- Cleaning & painting school facilities
- Assisting in fun and interactive after-school English sessions
- Building and supplying LED lights to mountain communities



DEVELOPMENT PROJECT SPORTS

OVERVIEW

We believe that sport is crucial in the social and mental development of children. Volunteer fundraising helps provide new sports equipment for schools, so that the children in these mountain communities can really enjoy time outside of the classroom!

UK school groups will have the chance to share their passion for sport with the local children and we organise an inclusive sports day for all to enjoy. As well as getting involved in school classics like the Egg and Spoon race, students will take part in a cultural exchange - an amazing way to gain a better understanding of new cultures and traditions.

VOLUNTEER ROLES

- Taking part in a Sports Day for the whole school
- Experiencing a cultural exchange with local students



DEVELOPMENT PROJECT

AGRICULTURE

OVERVIEW

We partner with each community to help contribute to the village's agriculture. To date, Travelteer and their volunteers have built 15 greenhouses with drip irrigation and water harvesting projects. These greenhouses drastically improve crop yields by holding in warmth and protecting them from flooding in the wet season.

All harvests produced are used within the local communities and the greenhouses create a sustainable method for future growth. As a volunteer you will be getting involved with everyday farming life!

VOLUNTEER ROLES

- Helping in the construction of greenhouses based on the needs of various mountain communities
- Getting stuck into daily farming duties



POKHARA LAKE



LIVING ARRANGEMENTS

ACCOMMODATION

WEEK 1: PEAK 2 PEAK TOUR

During our Peak 2 Peak Tour through the incredible landscapes of Nepal, school groups will stay in various small, boutique hotels that have been carefully selected by the Travelteer team. The accommodation varies throughout the country, but rooms are always single sex and generally setup with two - four people per room. All of these small hotels feature western amenities with showers, western style toilets and mosquito nets (where needed!). Our Travelteer staff will always be on-site with the students for supervision.

WEEK 2: VOLUNTEERING WEEK

For the majority of the volunteering week, the school group will stay at the Travelteer Base in the Pokhara. This small, private hotel has full western amenities and is in close proximity to beautiful Pokhara Lake. For one night during the week, students will experience a night staying in a local homestay - offering an amazing insight into the lives of local mountain communities! Volunteers will stay in these hand-selected homestays as a group with all meals being provided and a Travelteer coordinator staying on-site.



PRIVATE
HOTELS



WESTERN
AMENITIES



HAND
PICKED



SUPERVISION BY
TRAVELTEER STAFF



GROUP
ACCOMMODATION

LIVING ARRANGEMENTS

FOOD

School groups are provided with three meals a day throughout the 2 week experience.

BREAKFAST

Travelteer provides breakfast every morning - whether that be at the Travelteer Base in Pokhara or in one of our selected hotels whilst on tour! Throughout the week there is a range of continental breakfast options including toast, eggs, yogurt and fruit. There is also the chance to try traditional Nepalese breakfast options including Chai (a hot milky tea) with rice or some rice porridge.

LUNCH & DINNER

Students will taste a variety of different Nepalese delicacies including vegetable momos and Dhal Bhat as well as occasional western options. Lunch will be served either at the volunteer project or back at the volunteer accommodation. School groups will enjoy dinner either at the accommodation or a local restaurant!



DELICIOUS
LOCAL
CUISINE



DIETARY
REQUIREMENTS
CATERED FOR



3 MEALS
PER DAY



WESTERN
OPTIONS
AVAILABLE



LIVING ARRANGEMENTS TRANSPORT

At Travelteer safety & comfort is the utmost importance. That's why we have partnered with trusted vehicle suppliers to ensure high standards and regular vehicle maintenance. Our Travelteer drivers are highly experienced and have excellent knowledge of local roads.

During both the Peak 2 Peak Tour and the volunteering week, students will be transported to all locations on our Travelteer bus. Our buses are fully air conditioned with panoramic windows for students to enjoy the breathtaking views of Nepal as they cruise between stops!



**TRUSTED VEHICLE
SUPPLIERS**



**EXPERIENCED
DRIVERS**



**PANORAMIC
WINDOWS**



**COMFORTABLE
TRAVEL**



SUPPORT

PRE-DEPARTURE SUPPORT

We take away the burden of paperwork so students can focus on preparing themselves for the trip.

The Travelteer team holds pre-departure meetings for both students and parents at the school, where we provide training and support sessions.

Our Travelteer online dashboard makes preparing for the adventure incredibly easy, allowing participants to manage all documents and payments online. Each group member receives a volunteer pack to guide them through their experience!

IN-COUNTRY SUPPORT

Our UK expedition leaders meet the group at the school car park, providing flight chaperoning to/from Nepal.

Travelteer expedition leaders will lead the group through the entirety of the trip. Our experienced in-country team delivers UK standards with local knowledge to give the ultimate service. The UK operations centre provides international support for teams in the field, with an emergency support line for parents and schools.

WHAT'S INCLUDED?

We believe preparation is the key to success. That's why we have developed a seamless planning process for the students, parents & school. From trip launch to trip debrief we are here to support the group every step of the way!



STUDENT PRE-DEPARTURE PREPARATION



24/7 IN-COUNTRY SUPPORT



UK EXPEDITION LEADERS



UK OPERATIONS CENTRE & EMERGENCY SUPPORT LINE



TRAVELTEER ONLINE DASHBOARD

OPENING OUR REVAMPED TRAVELTEER KITCHEN FOR COMMUNITIES IN POKHARA!



SAFETY

ACCREDITATIONS



YOU ARE IN EXPERT HANDS



Travelteer's local knowledge is unrivalled. Our team has a wealth of experience in providing safe and secure environments for students whilst abroad. Don't just take our word for it, we've been externally assessed and earned accreditations from leading bodies such as the Learning outside the classroom Council (LOTC) and British Standard 8848.

TRAVELTEER INFRASTRUCTURE



We take a long-term approach when it comes to overseas expeditions. We have partnered with SAHAS Nepal and Trekker Nepal for all our logistics needs so that we can provide a guaranteed standard for schools. Both the Travelteer team and our established in-country partners have fantastic knowledge of the area and will ensure the student's experience will be second to none.

SAFETY MANAGEMENT SYSTEM



Speed of response during an incident is vital. We have developed a unique safety management system that provides our teams in the field with maximum support. Every element of our trip is audited by UK management with our in-country team giving a live feed of updates.



BACKUP IF NEEDED

With the UK operations centre at our core we have a dedicated, full-time team to manage any eventuality. Whether that be local or international assistance, our team is trained in incident management and crisis response. Communication is key, that's why all our staff are equipped with the latest communication technology, so our network is never down.



INSURANCE & MEDICAL ASSISTANCE

We have a comprehensive insurance policy providing the group cover for everything from medical expenses and repatriations to lost passports. Our trips are fully bonded by ATOL protecting the groups against unforeseen events.



GOVERNMENT RECOMMENDATIONS

We always work in line with the latest advice from the Foreign and Commonwealth Office. We use both government and private security advice as a foundation to all our trip planning.



SCHOOL TRIP COSTS

PER PERSON

Participants have a one-off registration fee of £168 and from then on all other costs can be paid off via installments throughout the year!

1

REGISTRATION FEE

£168

WHY REGISTER?

- Reserves your place on our School Trip experience
- Covers the UK operational costs of running our projects
- Unlimited access to all future Travelteer Programmes!
- Provides pre-departure and 24/7 in-country support from the Travelteer team

2

TRIP COSTS

£1,359

WHAT'S INCLUDED?

- Flight Chaperoning
- Accommodation
- Visa Services
- Travelteer Support Staff
- All Meals
- In-Country Transport
- Group Travel Insurance
- Airport Transfer



INTERNATIONAL FLIGHTS £950 - £1,200

GROUP BOOKINGS

Student flights to Nepal will be booked as a 'group booking', meaning that we will use our flight supplier to find the best flight option. We aim to book the flights after our first 'Pre-departure Meeting' - more information on the upcoming 'Next Steps' section of this booklet.

PRICING

Airfares are typically around £950 - £1,200 but this can fluctuate. The airline will require each volunteer to pay a flight deposit before a booking is made. This deposit is £250 with the remaining airfare due 3 months before travel.



UK

11 - 13 HOURS

7,293 KMS

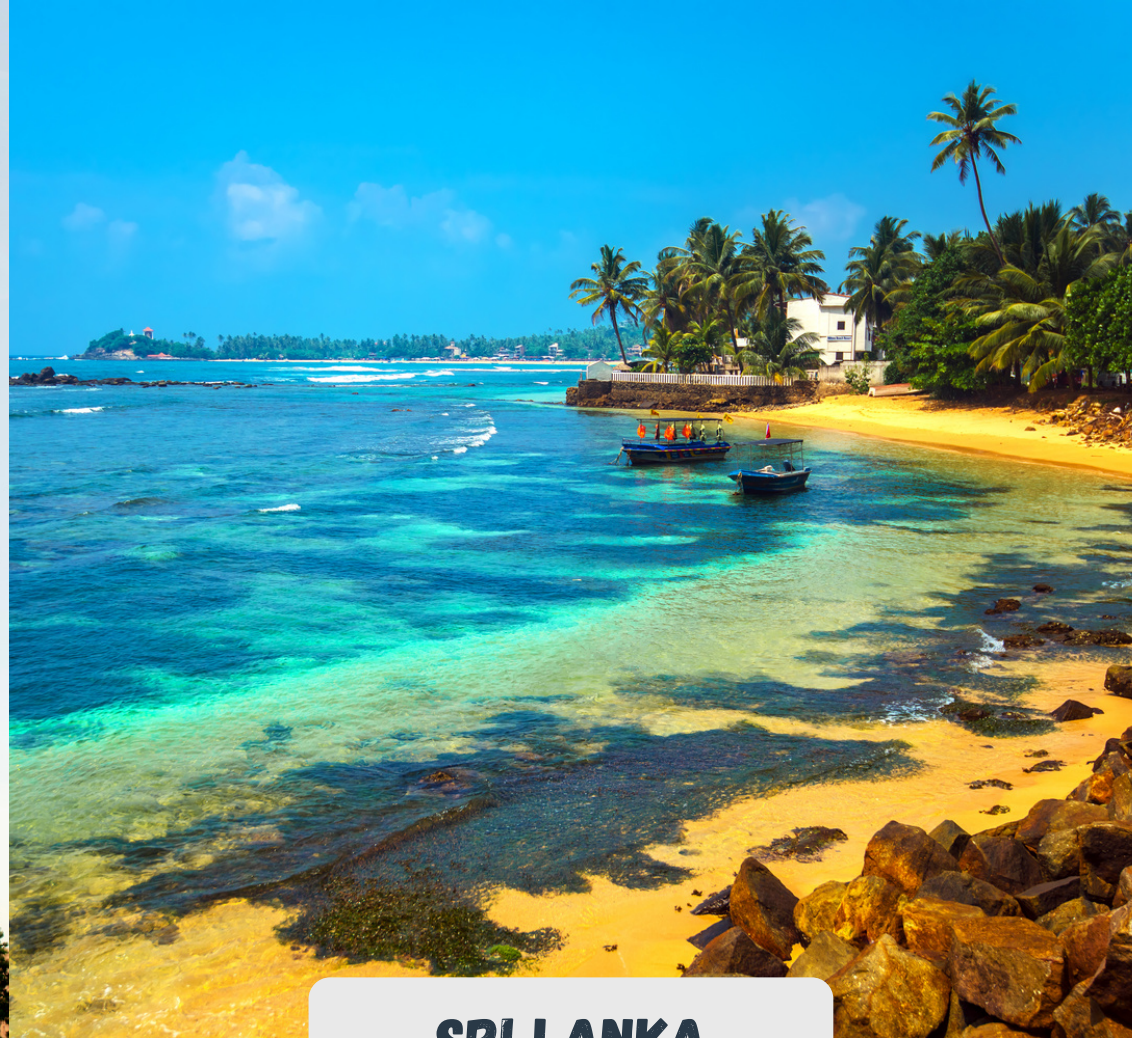


NEPAL





MOROCCO



SRI LANKA

**ALTERNATE
DESTINATIONS
IF REQUIRED**

In the event we are not able to travel to the intended destination we have other options available!

FUNDRAISING

Volunteer fundraising is an essential part of our programme and has already made a huge impact on the lives of disadvantaged communities in Nepal. From setting up your JustGiving page to advice on great fundraising activities, the Travelteer team is always here to help!



HOW MUCH SHOULD I RAISE?

We require each student to fundraise £100 as a minimum. 100% of all funds raised by the students go directly into the projects and have a huge impact on the local communities - the money raised enables us to buy equipment and develop the programmes further!

FLIGHT REIMBURSEMENT

Students are entitled to put any money over the required fundraising threshold of £100 towards the travel cost of their return flight. This will be reimbursed once the fundraising period has ended. Any surplus money exceeding the cost of your flight will be donated to Travelteer Impact to further our charitable causes!

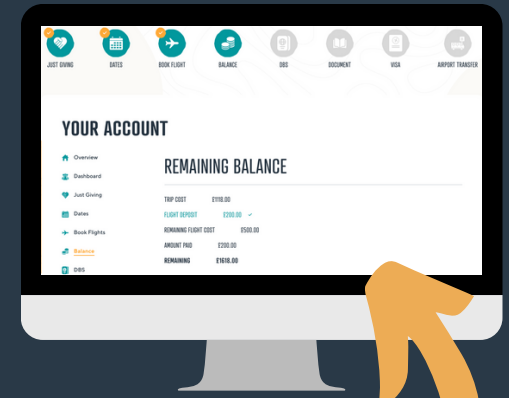


NEED IDEAS?

Not sure on how to get fundraising? Don't hesitate to get in contact with our team if you need some fundraising activity inspiration!

THE TRAVELTEER DASHBOARD

Our online dashboard was created to make group travel that much easier. By logging onto the dashboard via our website, students and parents will have a complete overview of the upcoming trip and can easily upload all required details.



OUR
DASHBOARD



OUR ONLINE TRIP PLATFORM

The Travelteer team uses the online dashboard to take care of managing all trip details, documentation and payments.

SEAMLESS TRIP PREPARATION

The dashboard guides parents and students through the whole planning process with an easy, step by step guide and progress bar.







NEXT STEPS

TIME TO KICK OFF YOUR NEXT ADVENTURE!



TRIP LAUNCH

This information session is for both the students and parents to attend. We will present the trip itinerary covering pre-departure steps & in-country procedures. It is also a great way for students to find out which volunteering programme would suit them best!



REGISTER WITH TRAVELTEER

Students who wish to go ahead with the trip can pay the registration fee to confirm their place after the trip launch.

3



PRE-DEPARTURE MEETING 1

Travelteer will return to the school for the first pre-departure meeting. The team will present to both the students and parents about trip preparation and to confirm the proposed flight details.

4



FLIGHT BOOKING & DOCUMENT COMPLETION

Following the confirmation of flight details in the previous meeting, Travelteer will be booking all flights, organising all visas and completing all other necessary paperwork.

5



PRE-DEPARTURE MEETING 2

One final meeting before we set off! The Travelteer team will return to the school to go over final trip preparations and a briefing on pre-departure, outbound and return details.

WHY CHOOSE TRAVELTEER?

ETHICAL VOLUNTEERING & RESPONSIBLE TRAVEL

Travelteer is at the forefront of ethical volunteering and responsible travel. We thoroughly train local staff to assist in our projects and keep them sustainably running all year round.

24/7 SUPPORT & MENTORING

Travelteer offers 24/7 support & mentoring both in the UK or Nepal. Our team will be with you from start to finish. Yes, that's right - all our team fly out to Nepal! That way you know you are in good hands.

EDUCATIONAL TOURS

Our educational tours are a once in a lifetime opportunity! Whether you are looking for culture, mountain trekking, safaris or white water rafting - Travelteer will show you the best Nepal has to offer!

AGAINST THE EXPLOITATION OF ANIMALS

We do not support or work with any animal projects that are solely created to meet the demand of volunteers such as baby elephant orphanages.

A LIFE CHANGING ADVENTURE

Travel and volunteering is the perfect way to broaden a student's horizons and we provides a safe and controlled environment for school groups to experience another culture very different to their own.

SAFETY

Student safety is of the utmost importance. That's why every aspect of the trip is managed entirely by us - we conduct regular risk assessments and ensure all our team are trained to handle emergencies.





START YOUR ADVENTURE

CONTACT US

GIVE US A FOLLOW!



@travelteer_



@travelteer.uk



@travelteer_uk



PHONE

0115 874 4399



EMAIL

admin@travelteer.co.uk



ADDRESS

28 Gordon Rd, West Bridgford
Nottingham, NG2 5LN

SEE WHAT'S
IN STORE &
WATCH OUR
VIDEO!



SCAN HERE

WWW.TRAVELTEER.CO.UK

